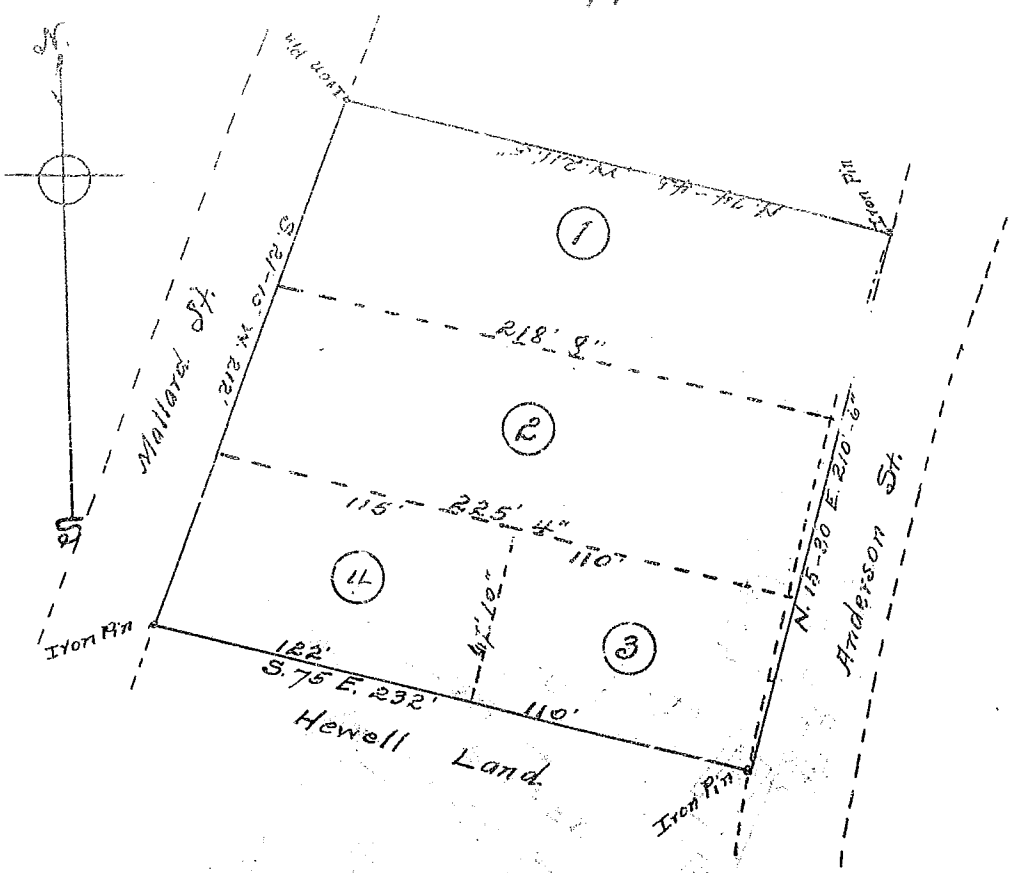


142



State of South Carolina,
Greenville County.

Scale 1 inch = 50 ft.

The above plat represents a certain lot of land surveyed for P. A. Snyder, situate in the City of Greenville, State and County aforesaid, lying between Anderson Street and Mallard Street, and contains One + Seven hundredths (1.07) acres in the aggregate, but into four (4) lots as represented by above plat. Surveyed Apr. 25, 1919. Wm. F. Lee, Surveyor. Copied and certified to by James R. Bates, Aug. 9th 1919.